

reflections **IN DESIGN**
SPRING | 2026

ARCHITECTURE
FRAMED BY TIME &
TERRAIN

THE
**Outdoor
Living** ISSUE

FASHION DESIGN
**TROPICAL
BLOOM**

SCULPTURE
A FAMILY LEGACY
WRITTEN IN STONE

FINE ART
ART IN NATURE

IFDA
INTERNATIONAL FURNISHINGS
AND DESIGN ASSOCIATION

Art in **NATURE**

**Owl's perch;
wind gauge;
and sundial.**

BY JACQUELINE BECKER / PHOTOGRAPHY COURTESY OF
JACQUELINE BECKER FINE ARTS CONSULTING SERVICES

On a bluff high above the Pacific Ocean south of San Francisco, the California Coastal Trail offers stunning panoramic views of the ocean below and the distant horizon. Primarily a parkland for walkers, bikers, birders, and all manner of wildlife, this carefully maintained sanctuary also serves as a front yard for homeowners blessed to live about the Trail. A chance encounter at an IFDA event introduced me to a couple building a new home here. Thus began a four year dream project to furnish art for highly adventuresome, visionary clients. Three works of art were commissioned for their enchanting outdoors.



"VOLANTE MOON" BY SCULPTOR RICHARD ERDMAN

“Great art picks up where nature ends.”

-Marc Chagall



The selection of the perfect art often starts with falling in love. For these clients, a trip to the Louvre in Paris where they were enthralled by the dramatic movement of the 190 BC Hellenistic “Winged Victory of Samothrace” served to establish the airborne aesthetic they sought to find in a contemporary sculpture to adorn their expansive view of the coastal trail.

The Vermont sculptor Richard Erdman was commissioned to create “Volante Moon”. Carved from a five-ton block of Carrara Bardiglio marble prized for its rich variegated gray and white patterning, it takes its name from the Italian word for flying, as its winged form captures the essence of both the Samothrace masterpiece and the flight of numerous bird species of the Coastal Trail.

The sculptor and I, together with the architects Walker / Warner and the landscape architects Lutsko Associates, determined the ideal site; poised between land and sea, as if about to take flight over the Pacific Ocean. Not only is the marble sculpture positioned in perfect harmony with the distant horizon, but it can also be seen upon entering the home, offering a thrilling focal point of the structure’s sight lines. The sculpture and its black granite base were dramatically airlifted into place via crane with the assistance of Ship/Art International. Lighting for evening viewing was embedded into the base as well as the surrounding plantings.

While “Volante Moon” was selected to engage an expansive vista, a more intimate sculpture site was created by a cloistered corridor of land nestled between the home’s three component structures. At seven feet tall, sculptor George Sherwood’s “Avian Geometry” commands the space. Its stainless steel kinetic arms, animated by the



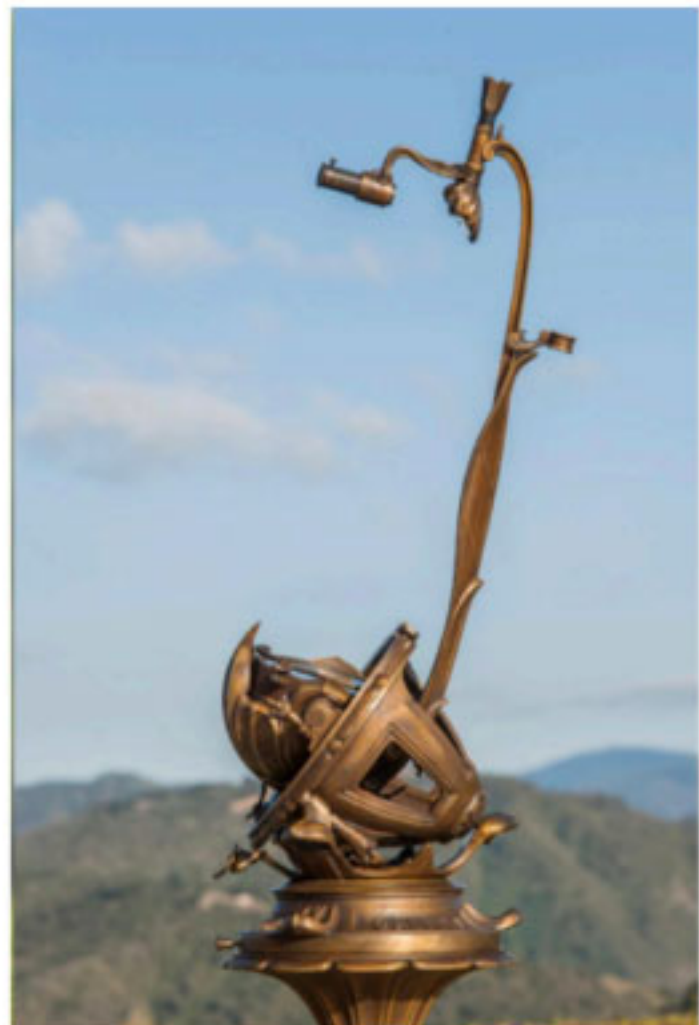
ABOVE: **"LUNA"** BY PRICHARD DESIGN
PHOTO BY MATTHEW MILLMAN
BELOW: **PORTER GARDEN TELESCOPE**
DESIGNED BY RUSSELL W. PORTER

wind, swoop high and low and round and round, catching flashes of California.

Lastly, the home's roof deck was graced with a functional sculpture, a Porter Garden Telescope. Despite its quant design based on an early 1920's garden telescope, the Porter Telescope offers a powerful tool for celestial explorations, a passion of the homeowners.

Access to the roof deck is via a dramatic circular stairwell with illuminated beaded glass treads. We sought to create a thematic connection between this extraordinary rooftop access and the home's interior. Prichard Design festooned the walls in the home's adjacent stairwell with a site-specific wall relief of white porcelain entitled "Luna." Evocative of the surface of the moon, Luna creates beautiful, soft, white-on-white patterns and shadows, and hints at the adventures to be had once you ascend the stairs to the roof deck.

All three sculptures' mediums were selected in part for





their ability to withstand coastal winds and salt air. Each needs only light maintenance and is very much a part of the home's rhythms. "Volante Moon" can be seen surrounded by grazing sheep brought to harvest the dry grasses that pose a seasonal fire risk, or as a perch for visiting owls. The kinetic "Avian Geometry" is an informal wind velocity gauge. The Porter Garden Telescope also serves as a sundial.

As the great Russian and French modernist artist Marc Chagall famously said, "Great art picks up where nature ends."